

Quick Reference Guide – Using Lumens™ Visual Presenters with Smart™ Board interactive white boards

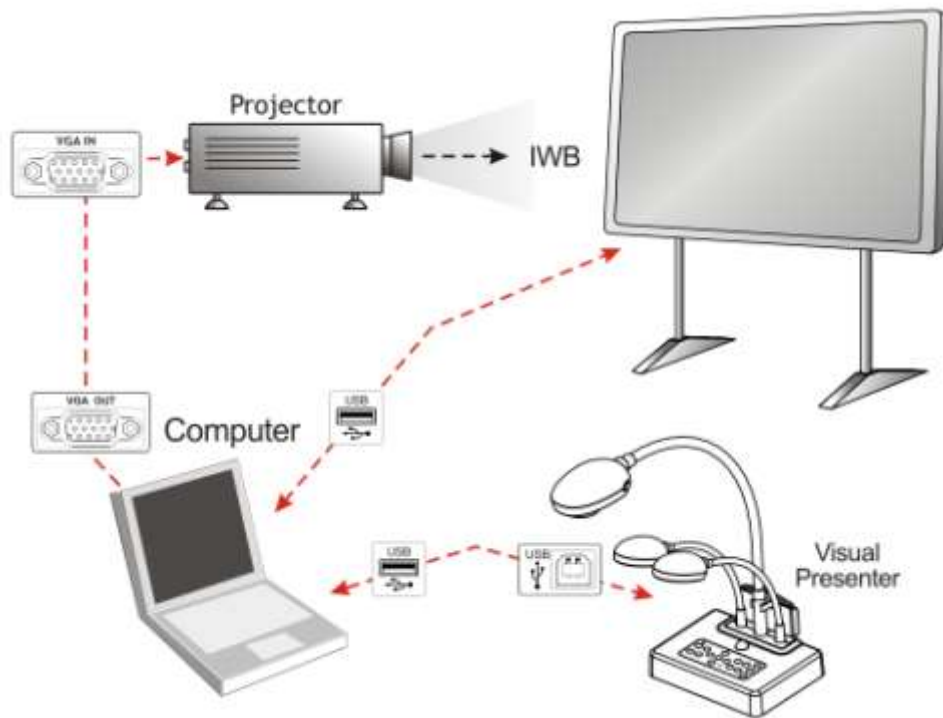
(For Windows XP, Vista)

Table of Content

1	System Diagram	2
2	Connecting the cables.....	2
3	Software Installation.....	3
4	Start the Smart Notebook.....	3
5	Basic operation	4
5.1	How to get a live video feed	4
5.2	How to record video	4
5.3	How to capture a still image	5
5.4	How to perform basic tuning.....	6

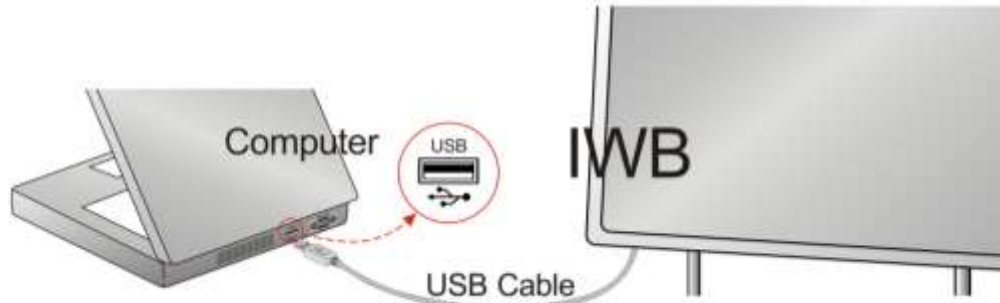
Date:2010/04/29

1 System Diagram

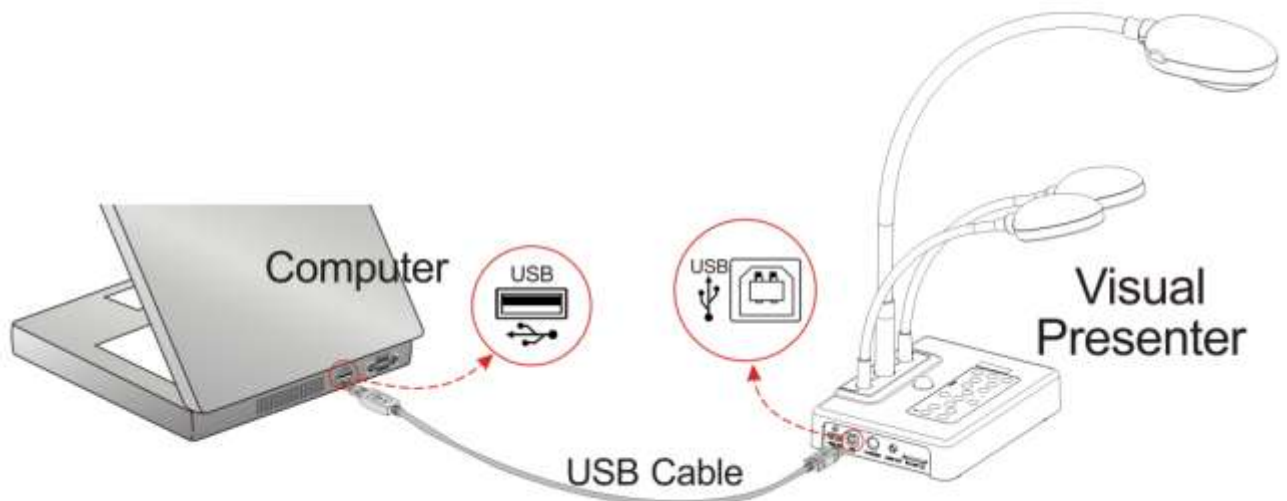


2 Connecting the cables

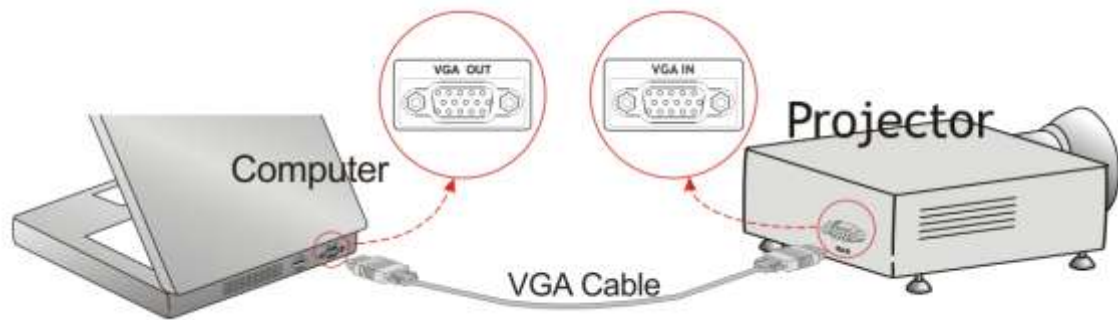
2.1 Connect the USB cable of the IWB (Interactive White Board) to the USB port on the computer.



2.2 Connect the other end of the USB cable to the USB port on the computer.



- 2.3 Connect the VGA cable to the VGA OUT port on the computer and the VGA IN port on the projector.

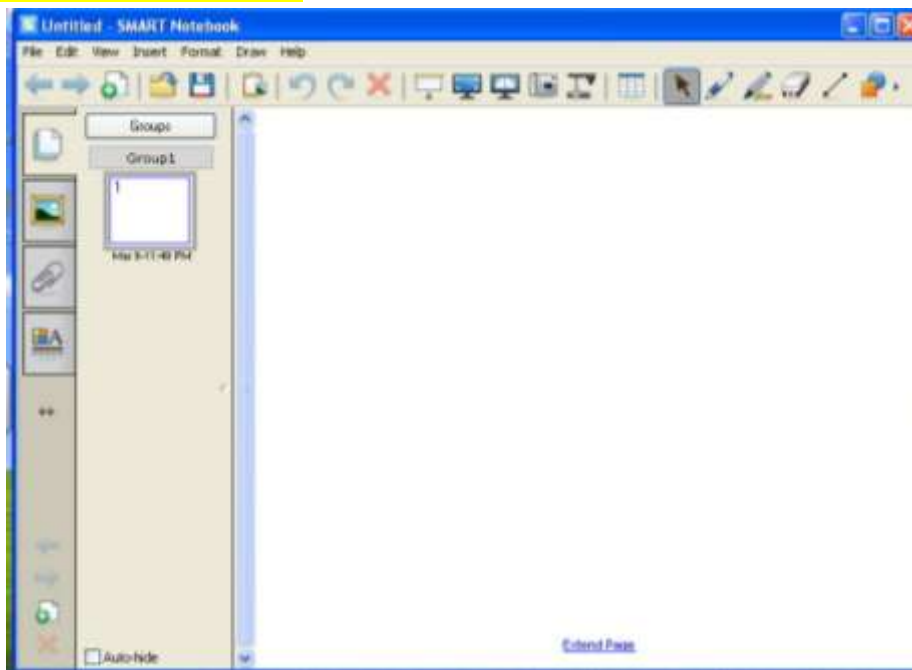


3 Software Installation

- 3.1 Download and install the **SMART Notebook** software from following URL : <http://www2.smarttech.com/st/en-US/Support/SBS/>
- 3.2 Download and install the **Ladibug™** software (for windows) and driver from the following URL: <http://www.lumens.com.tw/goto.htm>
(For more information, refer to the [Installation manual.](#))

4 Start the Smart Notebook

4.1 Launch the **Smart Notebook**



5 Basic operation

5.1 How to get a live video feed

5.1.1 Launch the **Ladibug™** application to see live video feed from the document camera.

5.1.2 If desired, use the **Smart Notebook's** annotation tool..



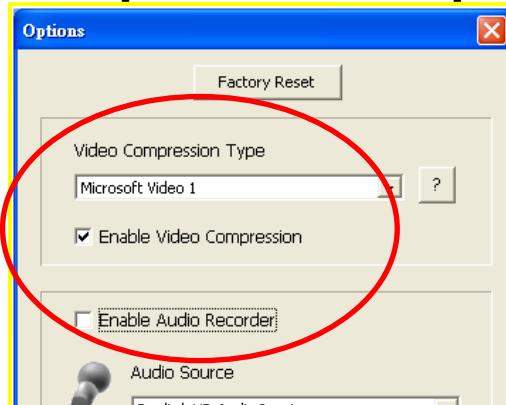
5.2 How to record video



5.2.1 Press  in **Ladibug™**

5.2.1.1 Select the desired video format.

5.2.1.2 Check the **[Enable Video Compress]** box.

5.2.1.3 Check the **[Enable Audio Recorder]** box.




5.2.2 Press  to open the video tool .

5.2.3 Press the **[Record]** radio button, the Save As window will appear.

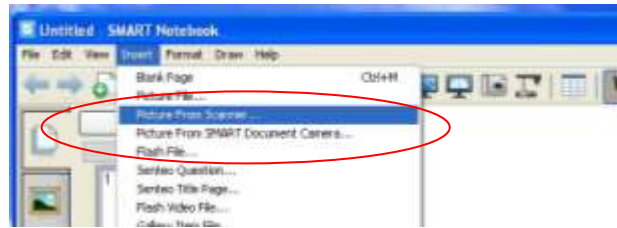
5.2.4 Type in the desired file name then press **[Save]** to start recording.

5.2.5 When finished, press **[Stop]** to end recording.

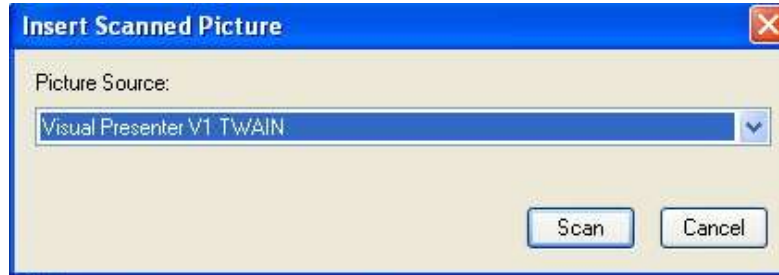
5.2.6 Press  to close the recording tool.

5.3 How to capture a still image

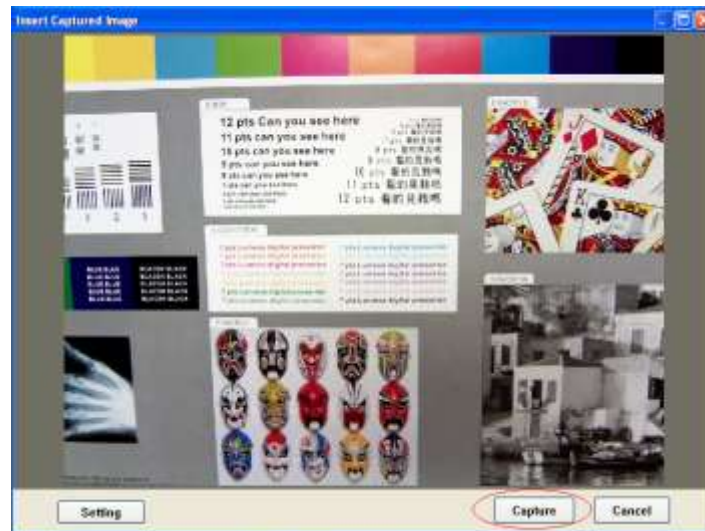
5.3.1 Press [Menu] / [Insert] / [Picture from Scanner]



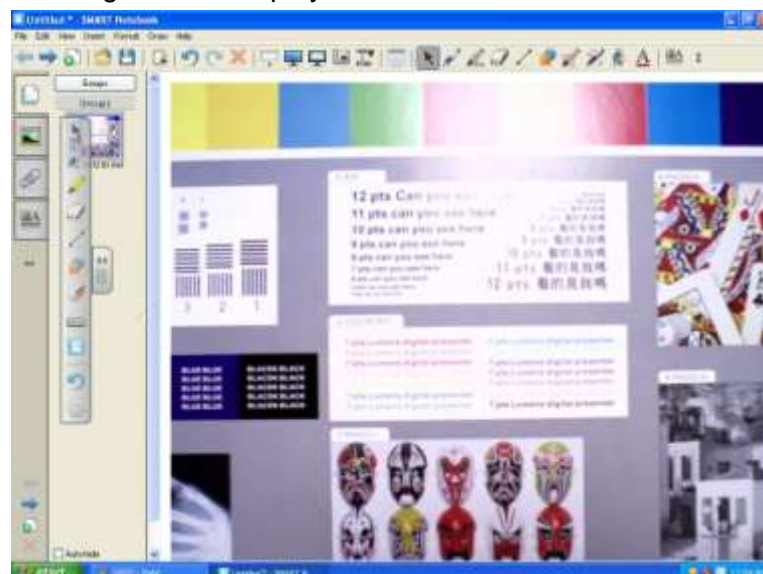
5.3.2 Select TWAIN device: [Visual Presenter V1 TWAIN] or [Visual Presenter V2 TWAIN]



5.3.3 Press [Capture] then close the window.



5.3.4 The captured image will be displayed in the *Smart Notebook*.

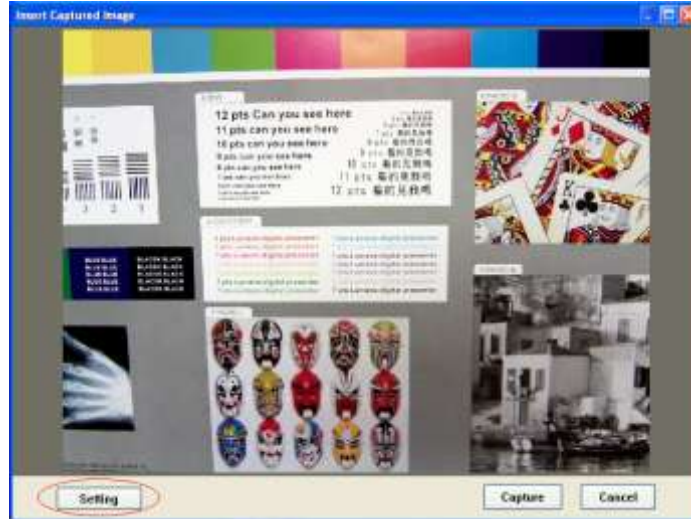


5.4 How to perform basic tuning

5.4.1 Press **[Menu]** / **[Insert]** / **[Picture from Scanner]**.

5.4.2 Select the desired TWAIN device: **[Visual Presenter V1 TWAIN]** or **[Visual Presenter V2 TWAIN]**.

5.4.3 Press **[Setting]** to launch the **Camera Settings** window.



5.5 If desired, fine tune the image with the **[Auto Tune]**, **[AF]**,...etc function.

<Note > Control the live image via the **Camera Settings** interface. The operating procedure is the same as the **remote control** and **control panel** of the **Visual Presenter**. Refer to the [Visual Presenter user manual](#) for more information.

<Note> The display of the button may vary depending on product functions. An inactive button will grey out.

➤ For Windows' User Interface

